

The Moab Mosquito Abatement District (MMAD), with assistance from the Salt Lake City Mosquito Abatement (SLCMAD) will be spraying to control for *Aedes aegypti* adult mosquitoes (a potentially serious new invasive mosquito species to Moab), which were discovered in Moab on 29 August 2019. The second round of spraying will take place tonight, (Monday night), 9 September, from 10:00 pm until we are finished. There will be two spray trucks out.

We have increased our perimeter for spraying: there will be two zones, Zone 1 and Zone 2.

Zone 1 will start at the intersection of 100 North and Hwy 191 (Main Street), will travel south on Hwy 191 to E Holyoak Lane where it meets the intersection of Mill Creek Drive, proceeding up Mill Creek Drive to include Powerhouse Lane, and then back along the east side of Moab to complete the route where it started.

Zone 2 will start at the intersection of Rubicon Trail and Hwy 191, will travel south on Hwy 191 to Dogwood Avenue/Doc Allen Drive, to 500 West, to include Bartlett subdivision, Moab Regional Hospital, Portal Vista, Grand Oasis, Stewart Lane, and then north to complete the route where it started. Please see attached .pdf of spray routes.

Zones will be sprayed simultaneously with a Sheriff's Department escort to ensure ease of traffic flow.

We will be spraying with Biomist insecticide, a synthetic pyrethroid containing permethrin.

An *Aedes aegypti* population is extremely difficult to control once it becomes established. We are extremely concerned with preventing this species from becoming established in Moab.

We appreciate your understanding.

Thank you,

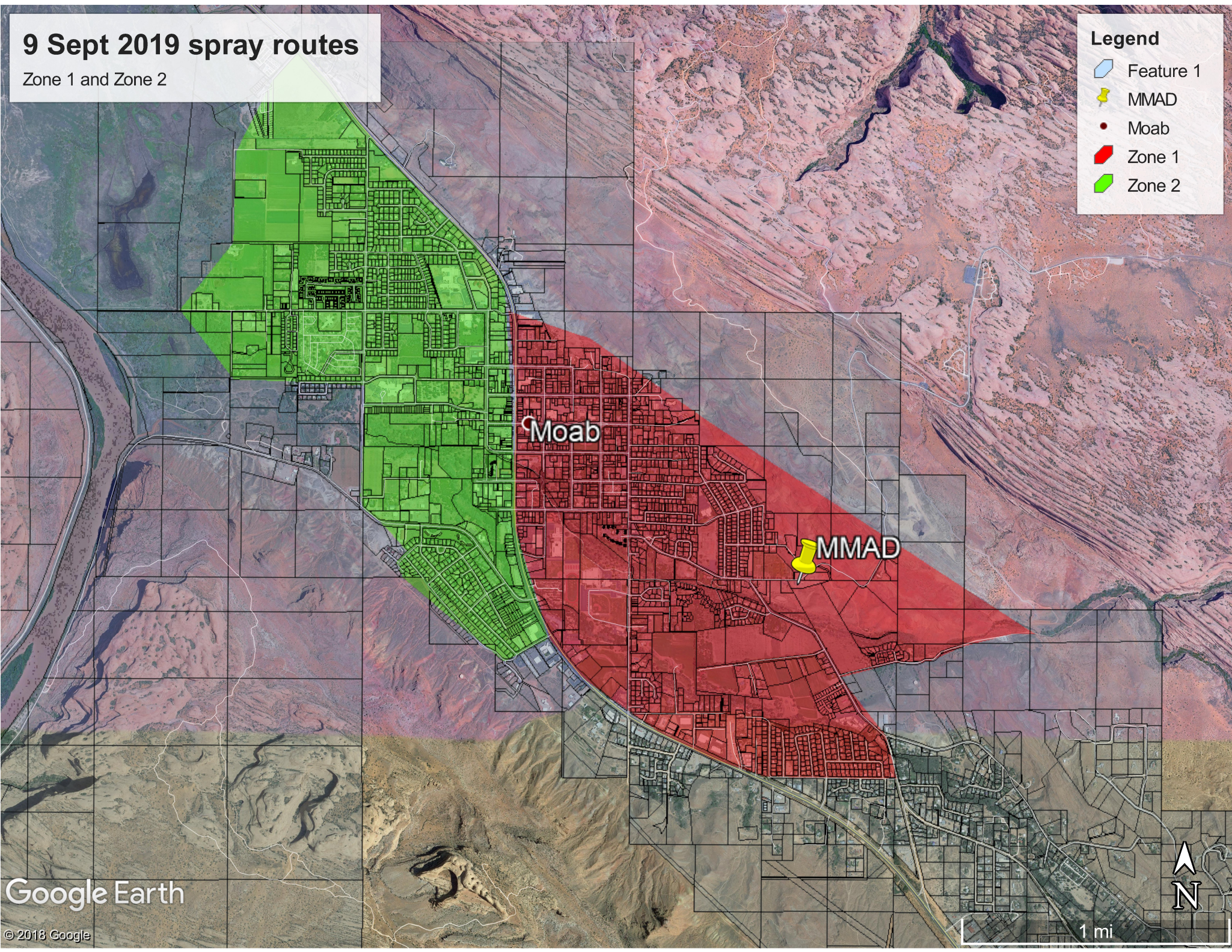
Moab Mosquito Abatement District

9 Sept 2019 spray routes

Zone 1 and Zone 2

Legend

- Feature 1
- MMAD
- Moab
- Zone 1
- Zone 2



1 mi